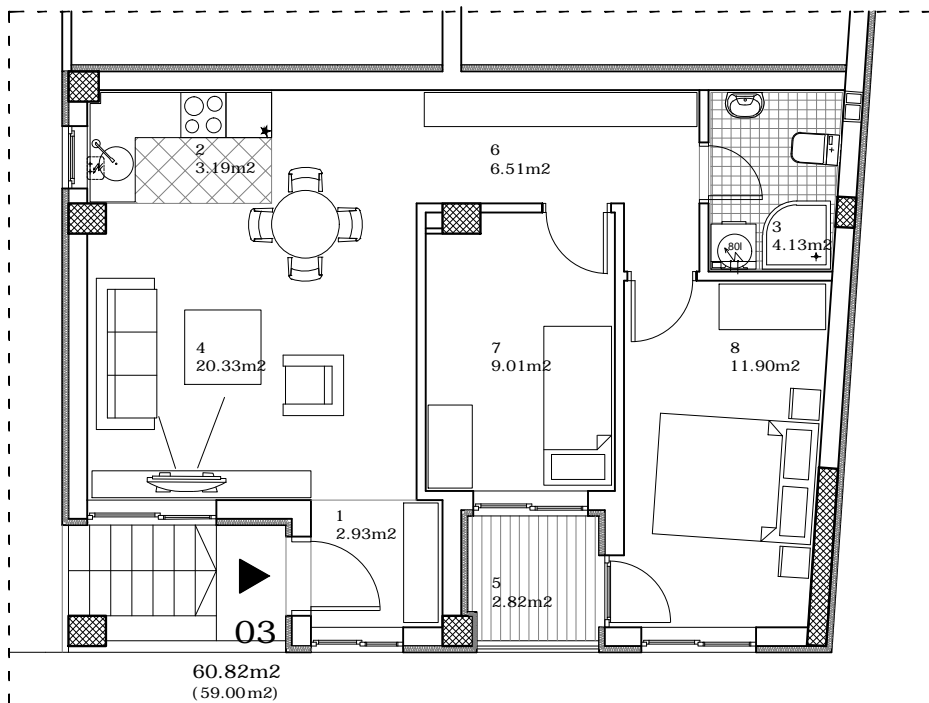


## osnova stana

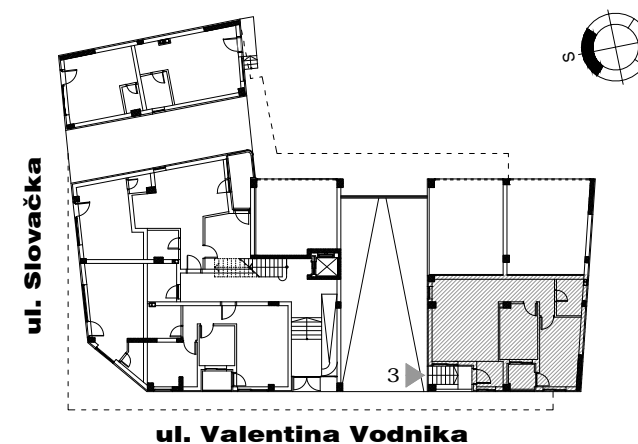
R = 1:100



## STAN 3 - TROSOBAN

1	ULAZ	2.93 m <sup>2</sup>
2	KUHINJA	3.19 m <sup>2</sup>
3	KUPATILO	4.13 m <sup>2</sup>
4	DNEVNA SOBA	20.33 m <sup>2</sup>
5	LOĐA	2.82 m <sup>2</sup>
6	DEGAŽMAN	6.51 m <sup>2</sup>
7	SPAVAĆA SOBA	9.01 m <sup>2</sup>
8	SPAVAĆA SOBA	11.90 m <sup>2</sup>
UKUPNO STAN 3 :		60.82 m <sup>2</sup>
		- 3% 59.00 m <sup>2</sup>

## OSNOVA PRIZEMLJA



ulica **SLOVAČKA 9**

**PRIZEMLJE/STAN 3**