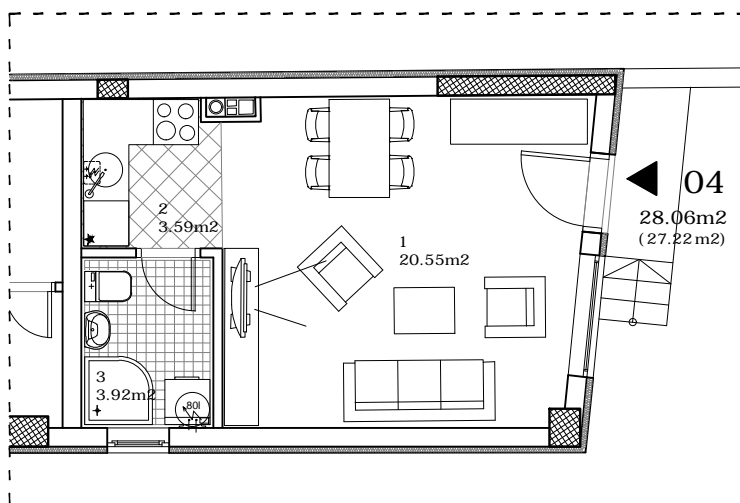


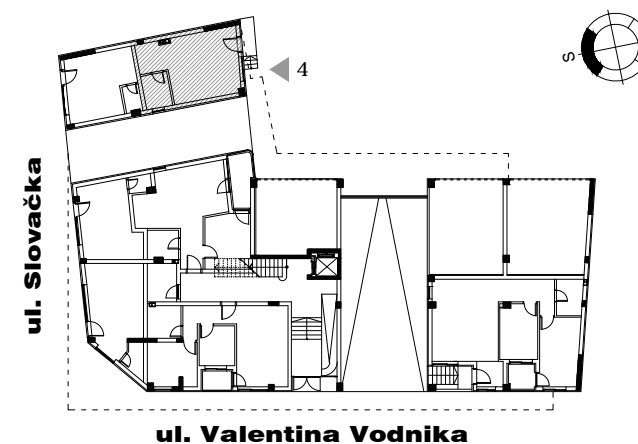
osnova stana
R = 1:100



STAN 4 - GARSONJERA

1	DNEVNA SOBA	20.55 m²
2	KUHINJA	3.59 m²
3	KUPATILO	3.92 m²
UKUPNO STAN 4 :		28.06 m²
		- 3% 27.22 m²

OSNOVA PRIZEMLJA



ulica SLOVAČKA 9

PRIZEMLJE/STAN 4