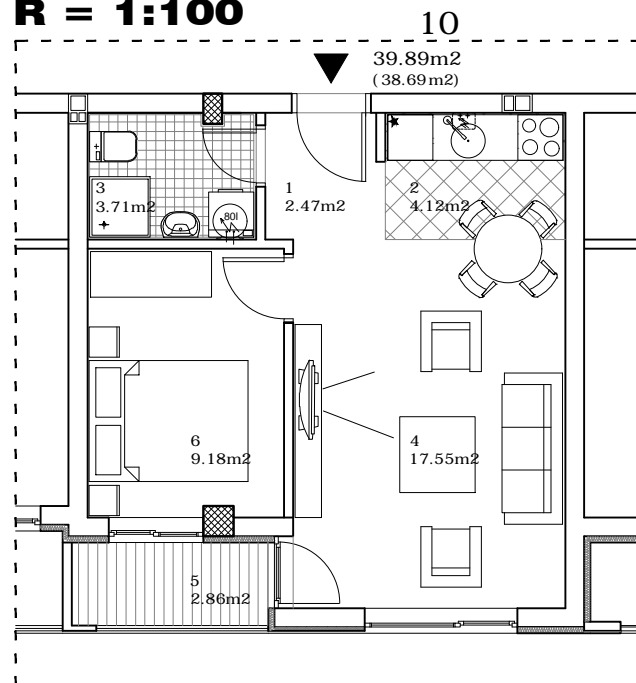


### osnova stana

R = 1:100



### STAN 10 - DVOSOBAN

1	ULAZ	2.47 m <sup>2</sup>
2	KUHINJA	4.12 m <sup>2</sup>
3	KUPATILO	3.71 m <sup>2</sup>
4	DNEVNA SOBA	17.55 m <sup>2</sup>
5	LOĐA	2.86 m <sup>2</sup>
6	SPAVAĆA SOBA	9.18 m <sup>2</sup>
<b>UKUPNO STAN 10 :</b>		<b>39.89 m<sup>2</sup></b>
		<b>- 3%</b> <b>38.69 m<sup>2</sup></b>

### OSNOVA I SPRATA



ulica **SLOVAČKA 9**

**I SPRAT/STAN 10**