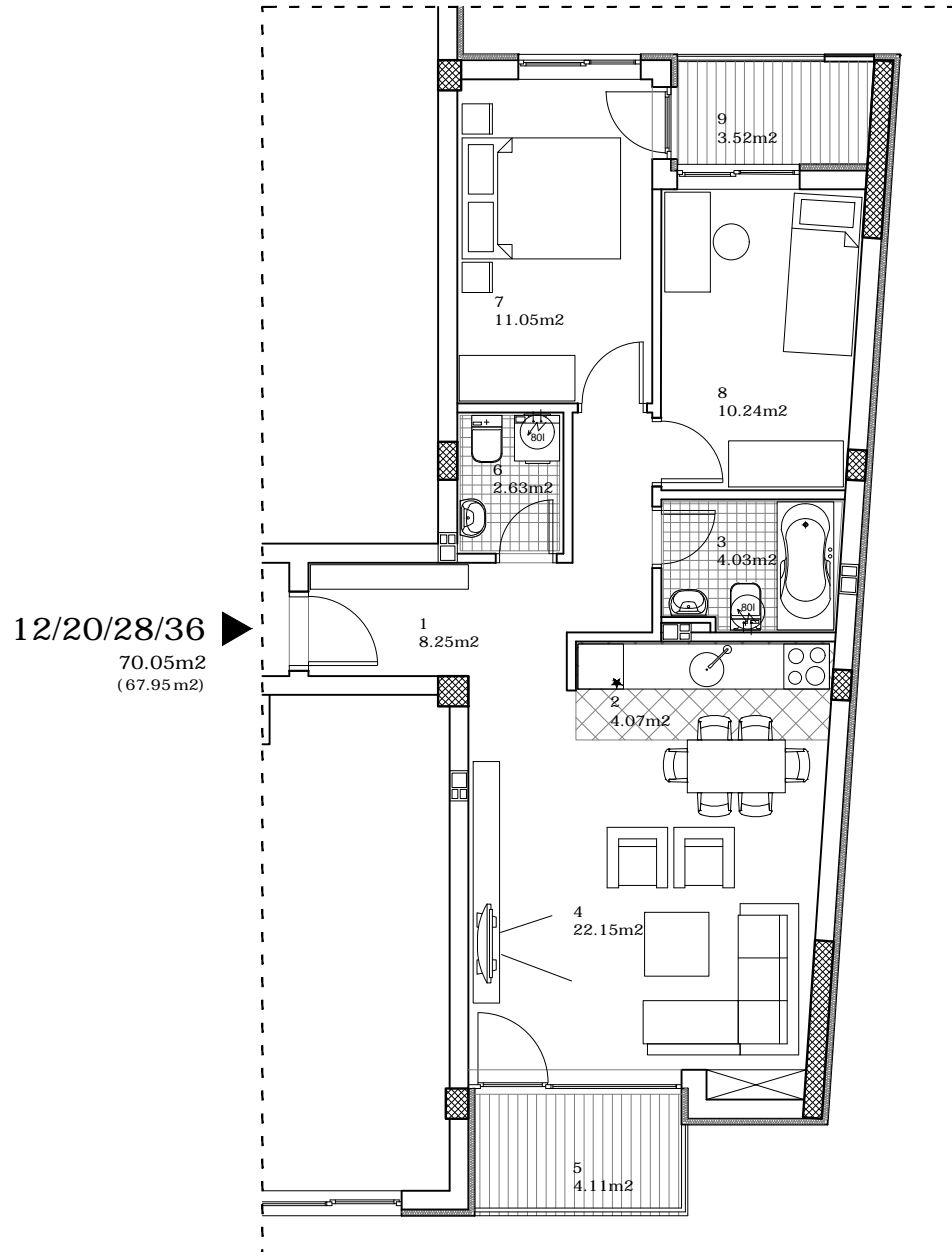


osnova stana
R = 1:100



STAN 12/20/28/36 - TROSOBAN

1	ULAZ	8.25 m ²
2	KUHINJA	4.07 m ²
3	KUPATILO	4.03 m ²
4	DNEVNA SOBA	22.15 m ²
5	LOĐA	4.11 m ²
6	WC	2.63 m ²
7	SPAVAĆA SOBA	11.05 m ²
8	SPAVAĆA SOBA	10.24 m ²
9	LOĐA	3.52 m ²

UKUPNO STAN 12/20/28/36 :	70.05 m²
	- 3% 67.95 m²

OSNOVA I/II/III i IV SPRATA



ulica SLOVAČKA 9

I/II/III/IV SPRAT/STAN 12/20/28/36