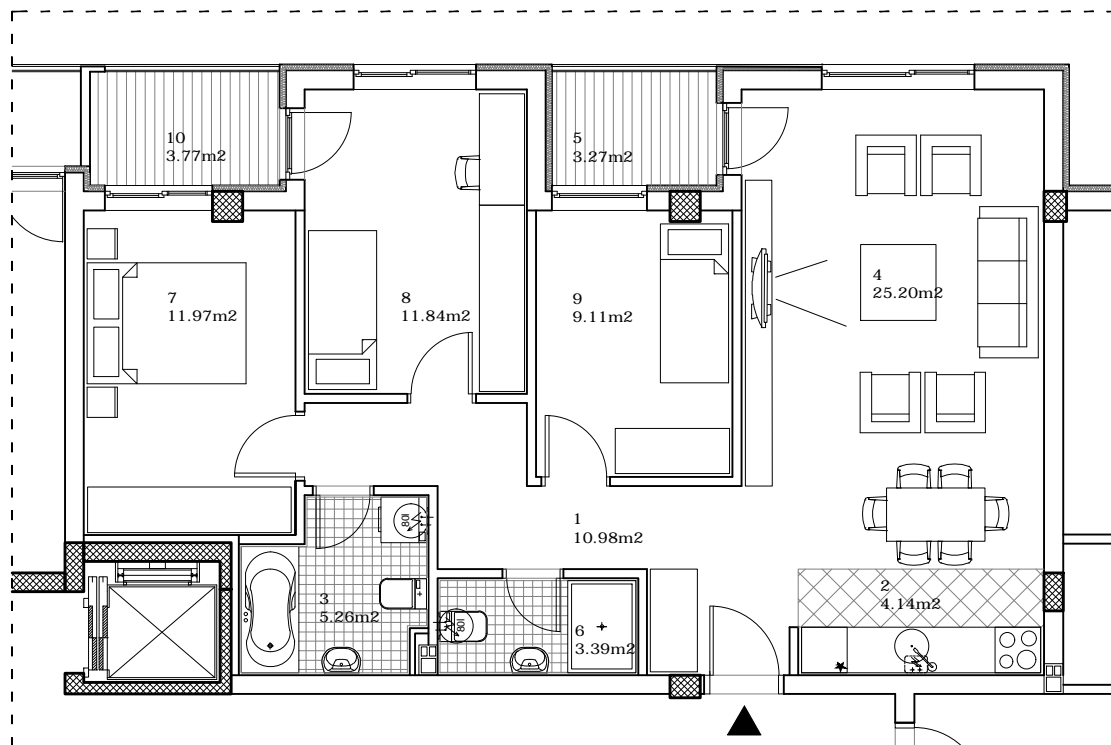


osnova stana
R = 1:100



13/21/29/37

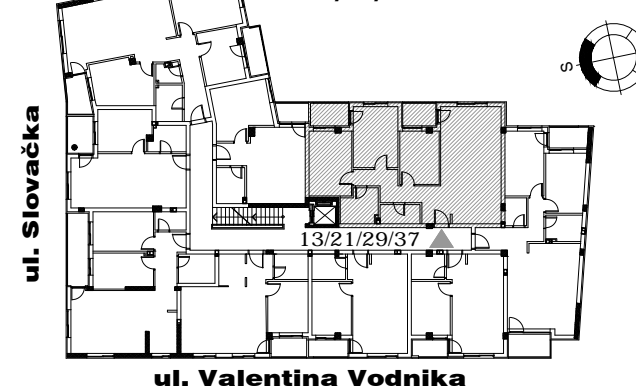
88.93m²
(86.26m²)

STAN 13/21/29/37 - ČETVOROSOBAN

1	ULAZ	10.98 m ²
2	KUHINJA	4.14 m ²
3	KUPATILO	5.26 m ²
4	DNEVNA SOBA	25.20 m ²
5	LOĐA	3.27 m ²
6	WC	3.39 m ²
7	SPAVAĆA SOBA	11.97 m ²
8	SPAVAĆA SOBA	11.84 m ²
9	SPAVAĆA SOBA	9.11 m ²
10	LOĐA	3.77 m ²

UKUPNO STAN 13/21/29/37 :	88.93 m²
- 3%	86.26 m²

OSNOVA I/II/III i IV SPRATA



ulica SLOVAČKA 9

I/II/III/IV SPRAT/STAN 13/21/29/37