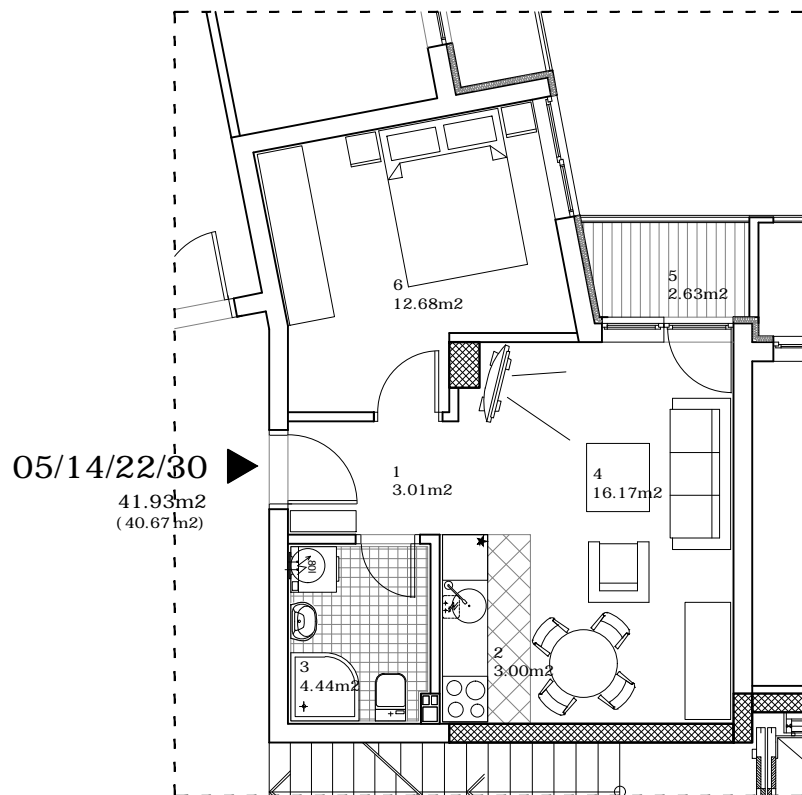


osnova stana
R = 1:100



STAN 5/14/22/30 - DVOSOBAN

1	ULAZ	3.01 m²
2	KUHINJA	3.00 m²
3	KUPATILO	4.44 m²
4	DNEVNA SOBA	16.17 m²
5	LOĐA	2.63 m²
6	SPAVAĆA SOBA	12.68 m²
UKUPNO STAN 5/14/22/30 :		41.93 m²
		- 3% 40.67 m²

OSNOVA I, II, III i IV SPRATA



ulica SLOVAČKA 9

I/II/III/IV SPRAT/STAN 5/14/22/30