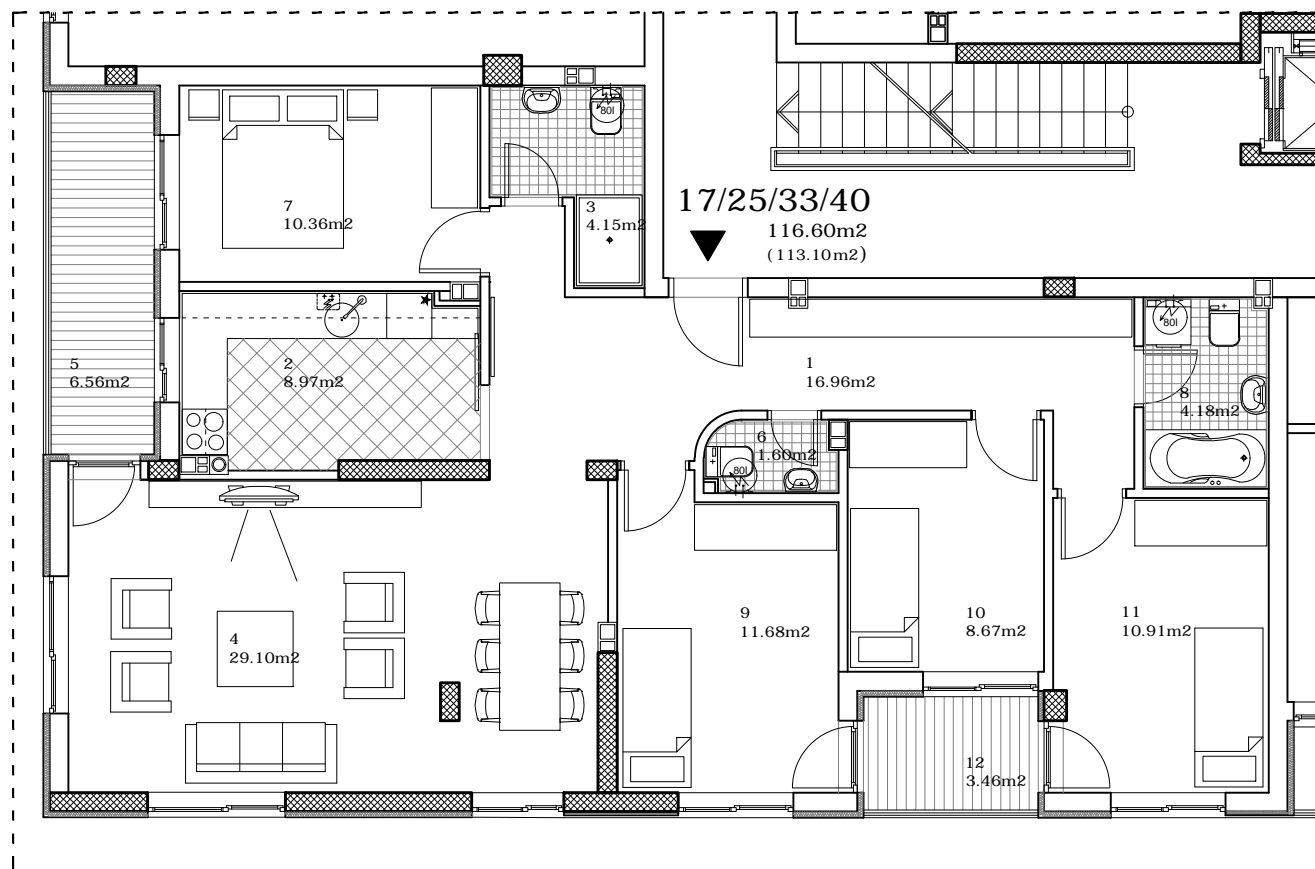


osnova stana
R = 1:100

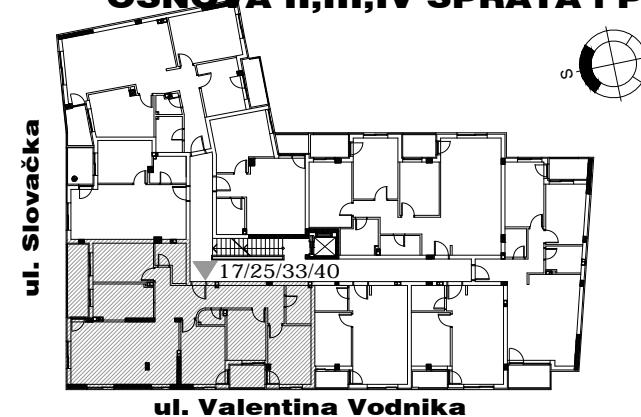


STAN 17/25/33/40 - PETOSOBAN

1	ULAZ	16.96 m ²
2	KUHINJA	8.97 m ²
3	KUPATILO	4.15 m ²
4	DNEVNA SOBA	29.10 m ²
5	LOĐA	6.56 m ²
6	WC	1.60 m ²
7	SPAVAĆA SOBA	10.36 m ²
8	KUPATILO	4.18 m ²
9	SPAVAĆA SOBA	11.68 m ²
10	SPAVAĆA SOBA	8.67 m ²
11	SPAVAĆA SOBA	10.91 m ²
12	LOĐA	3.46 m ²

UKUPNO STAN 17/25/33/40 : 116.60 m²
- 3% 113.10 m²

OSNOVA II,III,IV SPRATA i PK



ulica SLOVAČKA 9

II/III/IV SPRAT/PK/STAN 17/25/33/40