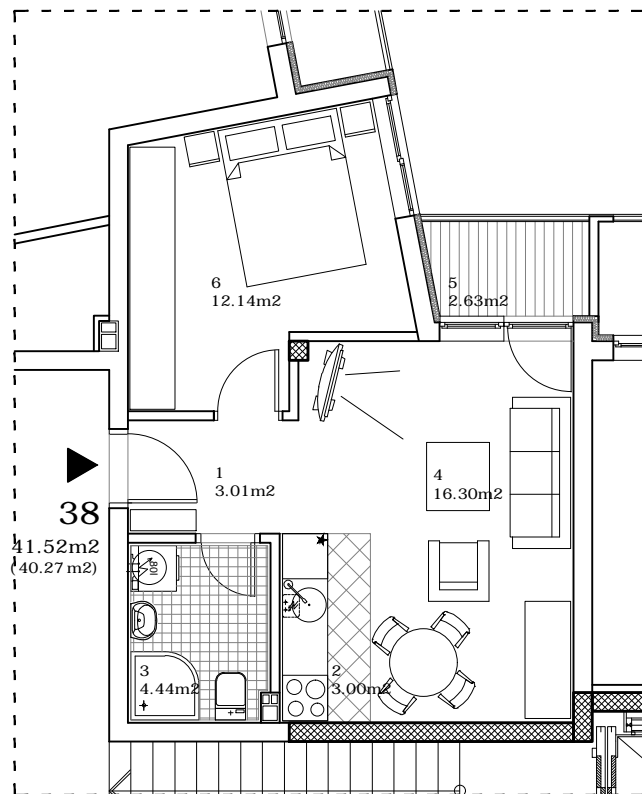


### osnova stana

R = 1:100



### STAN 38 - DVOSOBAN

1	ULAZ	3.01 m <sup>2</sup>
2	KUHINJA	3.00 m <sup>2</sup>
3	KUPATILO	4.44 m <sup>2</sup>
4	DNEVNA SOBA	16.30 m <sup>2</sup>
5	LOĐA	2.63 m <sup>2</sup>
6	SPAVAĆA SOBA	12.14 m <sup>2</sup>
<b>UKUPNO STAN 38 :</b>		<b>41.52 m<sup>2</sup></b>
		<b>- 3% 40.27 m<sup>2</sup></b>

### OSNOVA POTKROVLJA



**ulica SLOVAČKA 9 POTKROVLJE/STAN 38**