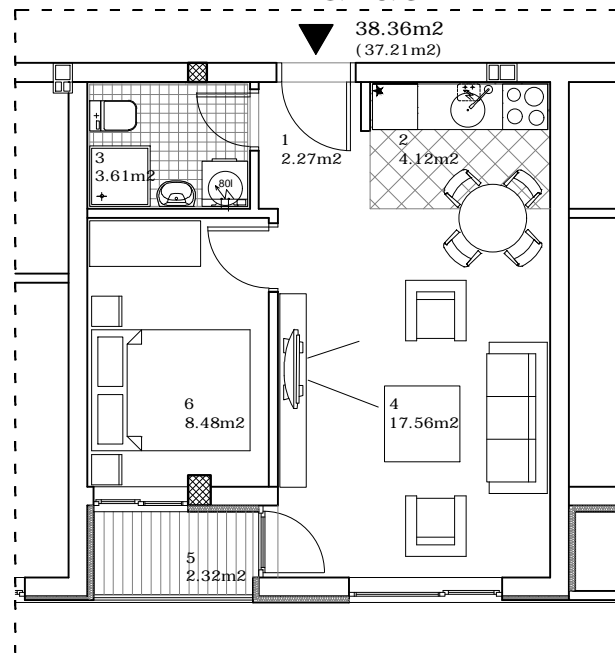


osnova stana

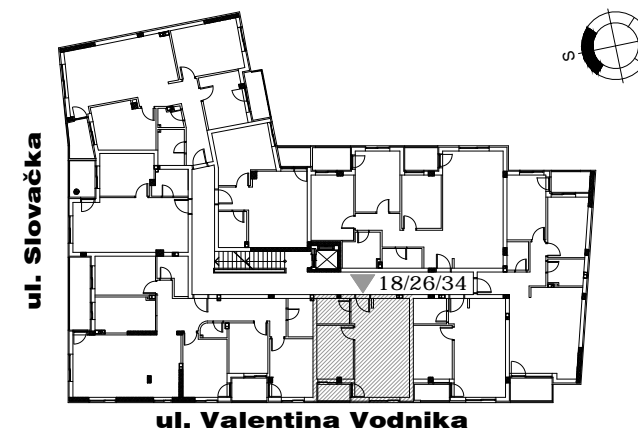
R = 1:100 18/26/34



STAN 18/26/34 - DVOSOBAN

1	ULAZ	2.27 m²
2	KUHINJA	4.12 m²
3	KUPATILO	3.61 m²
4	DNEVNA SOBA	17.56 m²
5	LOĐA	2.32 m²
6	SPAVAĆA SOBA	8.48 m²
UKUPNO STAN 18/26/34 :		38.36 m²
		- 3% 37.21 m²

OSNOVA II, III i IV SPRATA



ulica SLOVAČKA 9 II/III/IV SPRAT/STAN 18/26/34