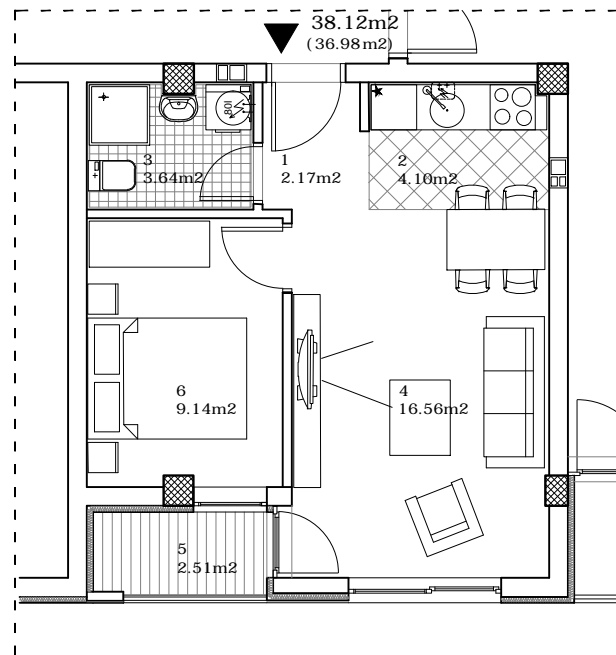


STAN 11/19/27/35 - DVOSOBAN

1	ULAZ	2.17 m²
2	KUHINJA	4.10 m²
3	KUPATILO	3.64 m²
4	DNEVNA SOBA	16.56 m²
5	LOĐA	2.51 m²
6	SPAVAĆA SOBA	9.14 m²
UKUPNO STAN 11/19/27/35 :		38.12 m²
		- 3% 36.98 m²

osnova stana**R = 1:100**

11/19/27/35

**OSNOVA I/II/III i IV SPRATA****ulica SLOVAČKA 9****I/II/III/IV SPRAT/STAN 11/19/27/35**